

## THE HENSCHEL LOW-LOADER PLATFORM STANDARD FEATURES

### PRODUCT INFO



### THE HIGHLIGHTS

- › **Load capacity optimised lightweight aluminium platform body** with steel reinforcements.
- › Suitable for **light commercial vehicles** with a **permissible total weight of up to 3.5 t**.
- › The low weight of the material **increases the vehicle's load capacity** - a significant advantage over conventional steel platform bodies.
- › **Lower height** than standard platform bodies - this **makes loading and unloading easier**.
- › **Ideal for landscaping, road maintenance, construction, municipalities and authorities**.
- › Distance (height) from the chassis to the loading bay is only 93 mm; height from the vehicle chassis to the upper edge of the panel is 486 mm.
- › Distance between mudguards on the inside is 1,340 mm.
- › **Reinforcement with additional cross beams increases stability and durability** - an advantage over our standard aluminium platform bodies with conventional height.
- › **Higher rigidity** thanks to durable and resistant steel - including mudguards.
- › **Steel parts painted in white aluminium RAL 9006** to match the look of the anodised aluminium.
- › **Wide range of accessories** - for example cab protections in various designs and side marker lights (see HENSCHEL Platform Body Accessories & Options).

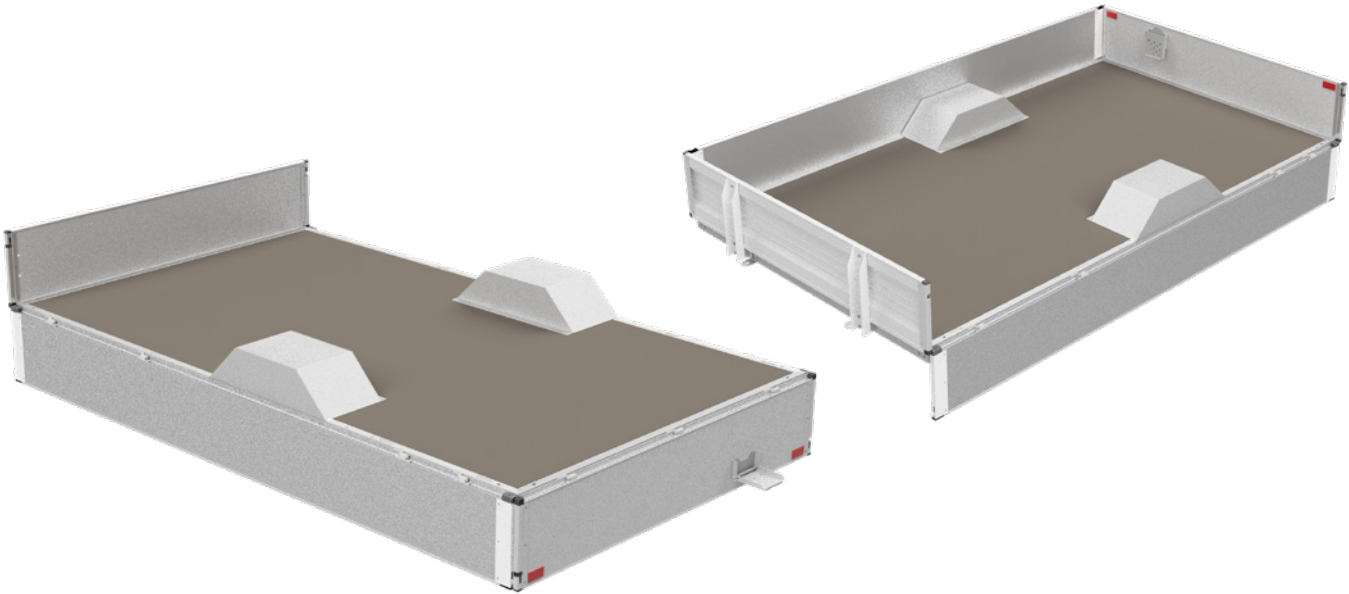
### AVAILABLE SIZES

- › Flexible design enables adaptation to most common chassis.
- › Up to 3.5 t total weight.
- › Customised dimensions on request.
- › Platform length can be customised - variable in increments of 100 mm.

## THE HENSCHEL LOW LOADER PLATFORM

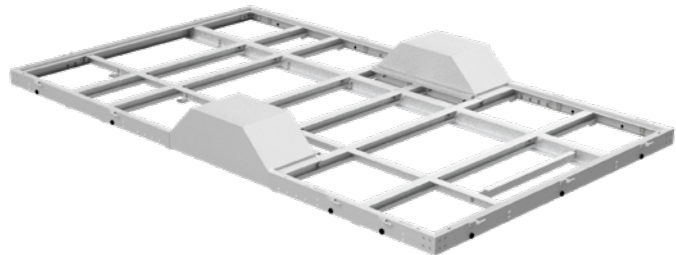
### STANDARD FEATURES

#### PRODUCT INFO



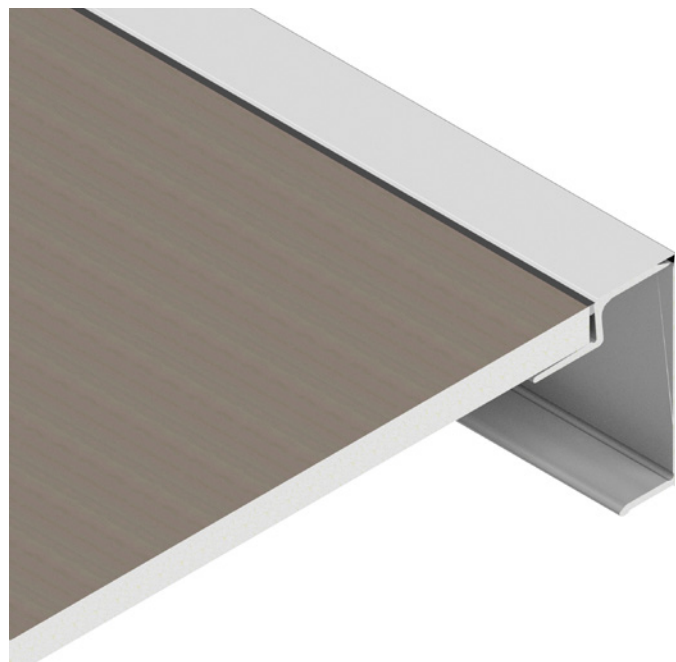
#### FRAME

- › Construction made of anodised aluminium and coated steel reinforcements.
- › The construction is particularly resistant to corrosion.
- › Components are screwed, clamped and welded.
- › Brackets are integrated into the platform structure – this ensures quick and easy installation of the body on the vehicle.



#### FLOOR

- › Multi-laminated plywood with screen-printed surface made in Finland – produced according to our specifications.
- › Particularly long panels ensure fewer adhesive points – and therefore fewer interruptions on the loading bay.
- › Abrasion-resistant and non-slip.
- › Thickness 15 or 18 mm.
- › Bolted with stainless steel screws and glued to the frame. This results in a high rigidity of the structure.
- › The edges are continuously sealed with a weather- and ageing-resistant adhesive. This protects the edges from swelling and makes the floor even more durable.



### LOAD SECURING

- › Lashing points embedded in the loading floor for a smooth loading bed (DIN EN 12640).
- › Lashing points made of forged parts (load up to 800 daN).



### LOCKING SYSTEM (Kinnegrip™ T50)

- › Smooth and high-quality locking system.
- › Integrated long handled locks made of aluminium and plastic.
- › Fully integrated into the panel profile – for a continuous free loading bay when the panels are folded down.
- › The locking lever opens completely upwards. It does not protrude from the side of the vehicle, thus reducing the risk of accidents.
- › When closed, the levers are completely hidden in the side panel.
- › The handle is equipped with a safety lock that prevents accidental opening.

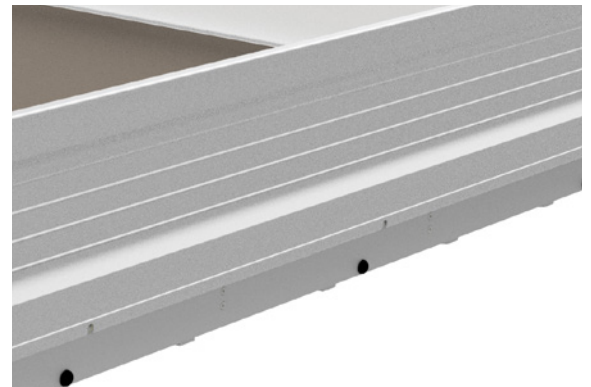


### PANELS

- › Anodized aluminium extrusions, 25 mm thick
- › Standard height 400 mm.
- › Weight-optimised profile thanks to a sophisticated design.
- › The front panel is fixed, the side and rear panel are foldable.
- › The stanchions integrated into the panels fold completely. This allows unrestricted access to the loading bay.
- › Can be dismantled without tools.
- › Smooth loading bay thanks to side-mounted hinges.



Profile of panel



## THE HENSCHEL LOW LOADER PLATFORM

### STANDARD FEATURES

#### PRODUCT INFO

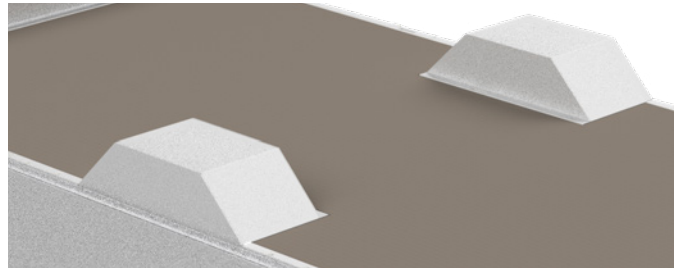
#### STEP

- › Folding step with safety lock on the rear panel.
- › Made of galvanized steel.
- › Tread weight max. 130 kg.
- › Makes it easier to get into the loading bay.
- › Mounted on the right in the direction of travel.



#### FENDER

- › Made of steel
- › Coated, matching the color of the platform body (white aluminium RAL 9006)
- › With reinforcements
- › Integrated on loading bay



#### SCOPE OF DELIVERY

- › Complete body with panels
- › Information stickers

Please note: Fastening material for mounting the body on the vehicle is not included in the scope of delivery.

### HENSCHEL ENGINEERING AUTOMOTIVE Sp. z o.o.

ul. Belgijska 4  
66-470 Kostrzyn n/O  
Poland

### GERRIT LÜDERS

Sales Director Europe | CEO

### HENSCHEL ENGINEERING AUTOMOTIVE GmbH

Unter den Linden 10  
10117 Berlin  
Germany

Mob +49 160 94470015  
gerrit.lueders@henschel-automotive.com

### WWW.HENSCHEL-AUTOMOTIVE.COM

#### DISCLAIMER

Product changes due to technical progress are reserved. No liability or guarantee is given for the timeliness, accuracy and completeness of the information and data provided. The illustrations, images and texts may contain accessories and special equipment that are not included in the standard scope of delivery. Typesetting and printing errors and mistakes excepted!